



NW 109th AVENUE BETWEEN NW 41st STREET (DORAL BLVD.) & NW 43rd LANE

PROJECT LOCATION

NW 18TH AV
NW 17TH AV
NW 16TH ST
NW 15TH ST
NW 14TH ST
NW 13TH ST
NW 12TH ST
NW 11TH ST
NW 10TH ST
NW 9TH ST
NW 8TH ST
NW 7TH ST
NW 6TH ST
NW 5TH ST
NW 4TH ST
NW 3RD ST
NW 2ND ST
NW 1ST ST
NW 10TH CT
NW 11TH CT
NW 12TH CT
NW 13TH CT
NW 14TH CT
NW 15TH CT
NW 16TH CT
NW 17TH CT
NW 18TH CT
NW 19TH CT
NW 20TH CT
NW 21TH CT
NW 22TH CT
NW 23TH CT
NW 24TH CT
NW 25TH CT
NW 26TH CT
NW 27TH CT
NW 28TH CT
NW 29TH CT
NW 30TH CT
NW 31TH CT
NW 32TH CT
NW 33TH CT
NW 34TH CT
NW 35TH CT
NW 36TH CT
NW 37TH CT
NW 38TH CT
NW 39TH CT
NW 40TH CT
NW 41TH CT
NW 42TH CT
NW 43TH CT
NW 44TH CT
NW 45TH CT
NW 46TH CT
NW 47TH CT
NW 48TH CT
NW 49TH CT
NW 50TH CT
NW 51TH CT
NW 52TH CT
NW 53TH CT
NW 54TH CT
NW 55TH CT
NW 56TH CT
NW 57TH CT
NW 58TH CT
NW 59TH CT
NW 60TH CT
NW 61TH CT
NW 62TH CT
NW 63TH CT
NW 64TH CT
NW 65TH CT
NW 66TH CT
NW 67TH CT
NW 68TH CT
NW 69TH CT
NW 70TH CT
NW 71TH CT
NW 72TH CT
NW 73TH CT
NW 74TH CT
NW 75TH CT
NW 76TH CT
NW 77TH CT
NW 78TH CT
NW 79TH CT
NW 80TH CT
NW 81TH CT
NW 82TH CT
NW 83TH CT
NW 84TH CT
NW 85TH CT
NW 86TH CT
NW 87TH CT
NW 88TH CT
NW 89TH CT
NW 90TH CT
NW 91TH CT
NW 92TH CT
NW 93TH CT
NW 94TH CT
NW 95TH CT
NW 96TH CT
NW 97TH CT
NW 98TH CT
NW 99TH CT
NW 100TH CT

CONTROL POINT TBM #1
FOUND PK NAIL & DISC
ELEVATION= (+) 8.10
N: 537608.598, E: 862263.649

CONTROL POINT TBM #2
FOUND PK NAIL & DISC LB #7335
ELEVATION= (+) 7.86
N: 538576.020, E: 862241.149

DORAL BD
NW 41ST ST
NW 42ND ST
NW 43RD ST
NW 44TH ST
NW 45TH ST
NW 46TH ST
NW 47TH ST
NW 48TH ST
NW 49TH ST
NW 50TH ST
NW 51ST LA
NW 52ND ST
NW 53RD ST
NW 54TH ST
NW 55TH ST
NW 56TH ST
NW 57TH ST
NW 58TH ST
NW 59TH ST
NW 60TH ST
NW 61ST ST
NW 62ND ST
NW 63RD ST
NW 64TH ST
NW 65TH ST
NW 66TH ST
NW 67TH ST
NW 68TH ST
NW 69TH ST
NW 70TH ST
NW 71ST ST
NW 72ND ST
NW 73RD ST
NW 74TH ST
NW 75TH ST
NW 76TH ST
NW 77TH ST
NW 78TH ST
NW 79TH ST
NW 80TH ST
NW 81ST ST
NW 82ND ST
NW 83RD ST
NW 84TH ST
NW 85TH ST
NW 86TH ST
NW 87TH ST
NW 88TH ST
NW 89TH ST
NW 90TH ST
NW 91ST ST
NW 92ND ST
NW 93RD ST
NW 94TH ST
NW 95TH ST
NW 96TH ST
NW 97TH ST
NW 98TH ST
NW 99TH ST
NW 100TH ST

821 HY
W 117TH AV
NW 13TH CT
NW 14TH CT
NW 15TH CT
NW 16TH CT
NW 17TH CT
NW 18TH CT
NW 19TH CT
NW 20TH CT
NW 21TH CT
NW 22TH CT
NW 23TH CT
NW 24TH CT
NW 25TH CT
NW 26TH CT
NW 27TH CT
NW 28TH CT
NW 29TH CT
NW 30TH CT
NW 31TH CT
NW 32TH CT
NW 33TH CT
NW 34TH CT
NW 35TH CT
NW 36TH CT
NW 37TH CT
NW 38TH CT
NW 39TH CT
NW 40TH CT
NW 41TH CT
NW 42TH CT
NW 43TH CT
NW 44TH CT
NW 45TH CT
NW 46TH CT
NW 47TH CT
NW 48TH CT
NW 49TH CT
NW 50TH CT
NW 51TH CT
NW 52TH CT
NW 53TH CT
NW 54TH CT
NW 55TH CT
NW 56TH CT
NW 57TH CT
NW 58TH CT
NW 59TH CT
NW 60TH CT
NW 61TH CT
NW 62TH CT
NW 63TH CT
NW 64TH CT
NW 65TH CT
NW 66TH CT
NW 67TH CT
NW 68TH CT
NW 69TH CT
NW 70TH CT
NW 71TH CT
NW 72TH CT
NW 73TH CT
NW 74TH CT
NW 75TH CT
NW 76TH CT
NW 77TH CT
NW 78TH CT
NW 79TH CT
NW 80TH CT
NW 81TH CT
NW 82TH CT
NW 83TH CT
NW 84TH CT
NW 85TH CT
NW 86TH CT
NW 87TH CT
NW 88TH CT
NW 89TH CT
NW 90TH CT
NW 91TH CT
NW 92TH CT
NW 93TH CT
NW 94TH CT
NW 95TH CT
NW 96TH CT
NW 97TH CT
NW 98TH CT
NW 99TH CT
NW 100TH CT

NW 33RD ST
NW 34TH ST
NW 35TH ST
NW 36TH ST
NW 37TH ST
NW 38TH ST
NW 39TH ST
NW 40TH ST
NW 41ST ST
NW 42ND ST
NW 43RD ST
NW 44TH ST
NW 45TH ST
NW 46TH ST
NW 47TH ST
NW 48TH ST
NW 49TH ST
NW 50TH ST
NW 51ST LA
NW 52ND ST
NW 53RD ST
NW 54TH ST
NW 55TH ST
NW 56TH ST
NW 57TH ST
NW 58TH ST
NW 59TH ST
NW 60TH ST
NW 61ST ST
NW 62ND ST
NW 63RD ST
NW 64TH ST
NW 65TH ST
NW 66TH ST
NW 67TH ST
NW 68TH ST
NW 69TH ST
NW 70TH ST
NW 71ST ST
NW 72ND ST
NW 73RD ST
NW 74TH ST
NW 75TH ST
NW 76TH ST
NW 77TH ST
NW 78TH ST
NW 79TH ST
NW 80TH ST
NW 81ST ST
NW 82ND ST
NW 83RD ST
NW 84TH ST
NW 85TH ST
NW 86TH ST
NW 87TH ST
NW 88TH ST
NW 89TH ST
NW 90TH ST
NW 91ST ST
NW 92ND ST
NW 93RD ST
NW 94TH ST
NW 95TH ST
NW 96TH ST
NW 97TH ST
NW 98TH ST
NW 99TH ST
NW 100TH ST

ESTEBONA AV
TOMERKUNOS AV
COSTA DEL SOL BO
ALCANTARA AV
COSTA DEL SOL BO
COSTA DEL SOL BO
DORA AV
ANAGUAS
CLUBHOUSE DR
NW 10TH CT
NW 11TH CT
NW 12TH CT
NW 13TH CT
NW 14TH CT
NW 15TH CT
NW 16TH CT
NW 17TH CT
NW 18TH CT
NW 19TH CT
NW 20TH CT
NW 21TH CT
NW 22TH CT
NW 23TH CT
NW 24TH CT
NW 25TH CT
NW 26TH CT
NW 27TH CT
NW 28TH CT
NW 29TH CT
NW 30TH CT
NW 31TH CT
NW 32TH CT
NW 33TH CT
NW 34TH CT
NW 35TH CT
NW 36TH CT
NW 37TH CT
NW 38TH CT
NW 39TH CT
NW 40TH CT
NW 41TH CT
NW 42TH CT
NW 43TH CT
NW 44TH CT
NW 45TH CT
NW 46TH CT
NW 47TH CT
NW 48TH CT
NW 49TH CT
NW 50TH CT
NW 51ST LA
NW 52ND ST
NW 53RD ST
NW 54TH ST
NW 55TH ST
NW 56TH ST
NW 57TH ST
NW 58TH ST
NW 59TH ST
NW 60TH ST
NW 6

LOCATION MAP
A PORTION OF SECTION 19, TOWNSHIP 53 SOUTH, RANGE 40 EAST
MIAMI-DADE COUNTY, FLORIDA.
SCALE = 1" : 1000'

C	COVER AND NOTES
C-1	PLAN VIEW & PROFILE
C-2	CROSS SECTIONS

THIS IS AN AS-BUILT SURVEY. THIS IS NOT A BOUNDARY SURVEY.

2. THIS CERTIFIES THAT THIS AS-BUILT SURVEY, WAS PREPARED UNDER MY SUPERVISION AND THAT THIS SURVEY MEETS THE STANDARDS OF PRACTICE SET FORTH BY THE FLORIDA BOARD OF PROFESSIONAL SURVEYOR AND MAPPERS IN CHAPTER 5J-17.50 THROUGH 5J-17.52 OF THE FLORIDA ADMINISTRATIVE CODE, PURSUANT TO SECTION 472.027 FLORIDA STATUTES.

3. THE SURVEY DEPICTED HERE IS COVERED BY PROFESSIONAL LIABILITY INSURANCE.

4. ALL ELEVATION REFER TO NGVD OF 1929.

5. ELEVATION HEREON WERE DERIVED FROM MIAMI-DADE COUNTY VERTICAL CONTROL POINTS AS SHOWN AS FOLLOWS:

NAME: N-3064 ELEVATION: 7.59 (NGVD 1929)
LOCATOR: 3054
LOCATION: NW 41 ST --- 49' SOUTH OF CENTERLINE
NW 107 AVE --- 79' EAST OF CENTERLINE
DESCRIPTION: PK NAIL AND BRASS WASHER IN CONCRETE CATCH BASIN
AT SE CORNER OF INTERSECTION.

NAME: N-3065 ELEVATION: 8.03 (NGVD 1929)
LOCATOR: 3054 W
LOCATION: NW 41 ST --- 25' NORTH OF CENTERLINE
NW 112 AVE --- 79' WEST OF CENTERLINE
DESCRIPTION: PK NAIL AND BRASS WASHER IN CONCRETE CATCH BASIN
AT NW CORNER OF INTERSECTION.

6. DATE OF FIELD WORK: JULY/2016.

7. STATE PLANE COORDINATE USED AS FOLLOWS:
PROVIDED BY: MIAMI DADE COUNTY GPS CONTROL POINT
STATION DESIGNATION: DORAL LOCATOR: 3034
LATITUDE: N 25° 48' 41.336467" LONGITUDE: W 80° 21' 11.679849"
NORTHING: 537696.5319 (US FEET) EASTING: 868934.4068 (US FEET)
COORDINATE SYSTEM: US STATE PLANE 1983
HORIZONTAL DATUM: NAD 1983/90 SECTION: 29-53-40
STATE PLANE ZONE: FLORIDA EAST 901.
DESCRIPTION: STATION MARK IS LOCATED NEAR THE INTERSECTION OF NW 97 AVENUE AND NW 41 STREET EXTENSION. STATION MARK IS LOCATED IN THE SOUTHEAST QUADRANT OF THE INTERSECTION ON THE CONCRETE SIDEWALK LOCATED ON THE SOUTH SIDE OF NW 41 STREET AND ABOUT 22 FEET EAST OF THE PROJECTED EAST EDGE OF PAVEMENT OF NW 97 AVENUE. STATION MARK IS BRASS DISK STAMPED DORAL.

8. CERTIFIED TO: CITY OF DORAL.

I HEREBY CERTIFY THAT THE AS-BUILT SURVEY OF THE PROPERTY
AS DESCRIBED IN THE FOREGOING CAPTION HAS BEEN MADE
UNDER MY DIRECTION AND IT IS TRUE AND CORRECT TO THE
BEST OF MY KNOWLEDGE, BELIEF AND PROFESSIONAL JUDGEMENT.
CERTIFIED TO: CITY OF DORAL.

NOTE:NOT A VALID SURVEY WITHOUT THE
SIGNATURE AND ORIGINAL SEAL OF A
FLORIDA REGISTERED SURVEYOR AND MAPPER

MICHAEL CAROZZA, P.S.M.
PROFESSIONAL SURVEYOR AND MAPPER
STATE OF FLORIDA, No. 6965

MPG TECHNICAL GROUP CORP.		GRADING AS-BUILT SURVEY - CITY OF DORAL EXCAVATION GRADES NW 109th AVENUE BETWEEN NW 41st STREET (DORAL BLVD.) & NW 43rd LANE	
CERTIFICATE OF AUTH. # LB-6932 908 S.W. 141st Avenue, Miami, Florida 33184 Ph. (305) 559-0043 Fax. (305) 559-4914		Project Name:	
Project: AS-BUILT			
Date: JULY/2016			
Scale: AS SHOWN			
Drawn: SETOFIPLANS.COM			
Job: 160728			
Sheet		No.	DATE
		BY	APP.
			REVISION

FOLIO # 35-3019-001-0520
A PORTION OF TRACT 57
"FLORIDA FRUIT LAND'S COMPANY SUBDIVISION"
(P.B. 2 - PG. 17)

FOLIO # 35-3019-001-0530
A PORTION OF SOUTH 1/2 TRACT 58
"FLORIDA FRUIT LAND'S COMPANY SUBDIVISION"
(P.B. 2 - PG. 17)

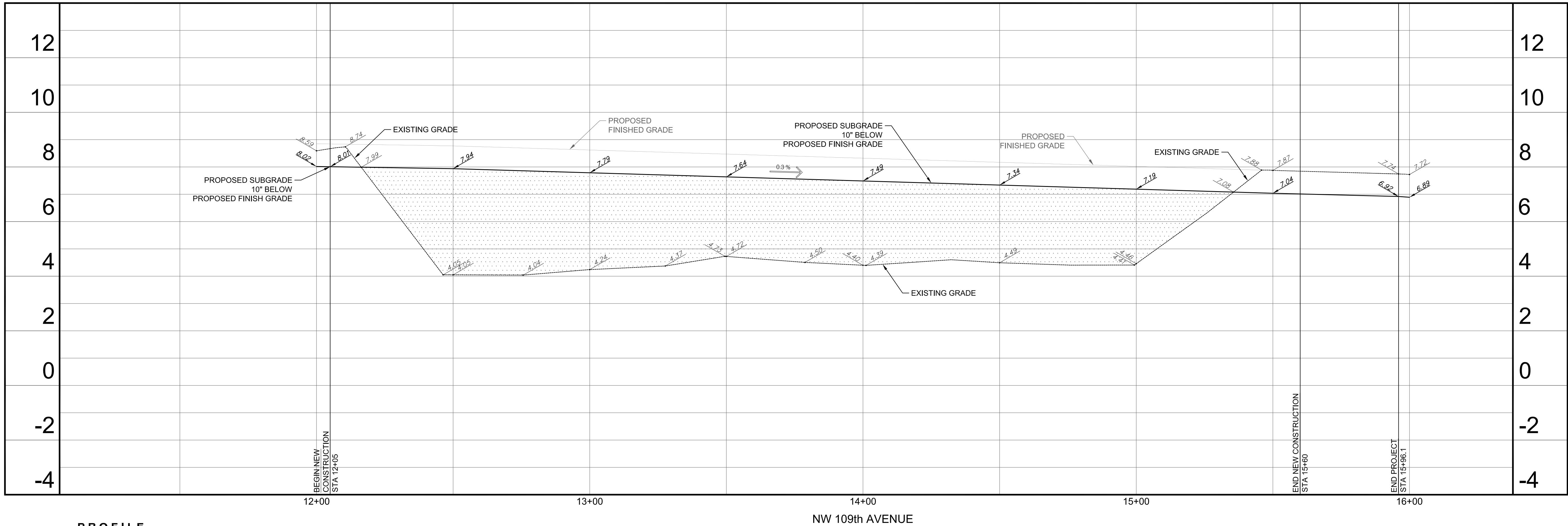
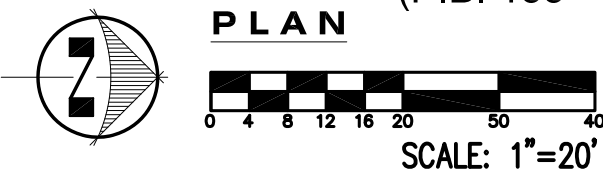
FOLIO # 35-3019-001-0531
A PORTION OF NORTH 1/2 TRACT 58
"FLORIDA FRUIT LAND'S COMPANY SUBDIVISION"
(P.B. 2 - PG. 17)

FOLIO # 35-3019-019-0890
A PORTION OF TRACT "E"
"HAWKSNEST FIRST ADDITION"
(P.B. 151 - PG. 97)

FOLIO # 35-3019-030-0010
10895 NW 41st STREET, DORAL, FL. 33178
A PORTION OF TRACT "A"
"DORAL INTERNATIONAL PARK"
(P.B. 155 - PG. 53)

FOLIO # 35-3019-001-0500
A PORTION OF TRACT 55
"FLORIDA FRUIT LAND'S COMPANY SUBDIVISION"
(P.B. 2 - PG. 17)

FOLIO # 35-3019-069-0001
A PORTION OF TRACT "A"
"ENCLAVE AT DORAL"
(P.B. 153 - PG. 2)



PROFILE
SCALES: HORIZONTAL : 1"=20'
VERTICAL : 1"=2'

- Denotes Area to be filled
1485 Cubic Yards
- Denotes Proposed Subgrade Elevation
10" Below Proposed Finish Grade

- Denotes Existing Grade Elevation
on July 2016
- Denotes Existing Elevation
Taken by Others

I HEREBY CERTIFY THAT THE AS-BUILT SURVEY OF THE PROPERTY
AS DESCRIBED IN THE FOREGOING CAPTION HAS BEEN MADE
UNDER MY DIRECTION AND IT IS TRUE AND CORRECT TO THE
BEST OF MY KNOWLEDGE, BELIEF AND PROFESSIONAL JUDGEMENT.

NOTE: NOT A VALID SURVEY WITHOUT THE
SIGNATURE AND ORIGINAL SEAL OF A
FLORIDA REGISTERED SURVEYOR AND MAPPER

MICHAEL CAROZZA, P.S.M.
PROFESSIONAL SURVEYOR AND MAPPER
STATE OF FLORIDA, No. 6965

Project Name:
GRADING AS-BUILT SURVEY - CITY OF DORAL
EXCAVATION GRADES
NW 109th AVENUE BETWEEN NW 41st STREET (DORAL BLVD.) & NW 43rd LANE

MPG TECHNICAL GROUP CORP.
CERTIFICATE OF AUTH. # LB-8932
908 S.W. 141st Avenue,
Miami, Florida 33164
Ph. (305) 559-9043 Fax. (305) 559-9914

Project: AS-BUILT
Date: JULY/2016
Scale: AS SHOWN
Drawn: SETOFPLANS.COM
Job: 160728
Sheet

C-1

2 of 3 Sheets

